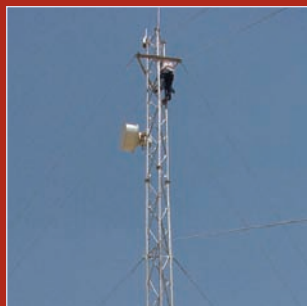


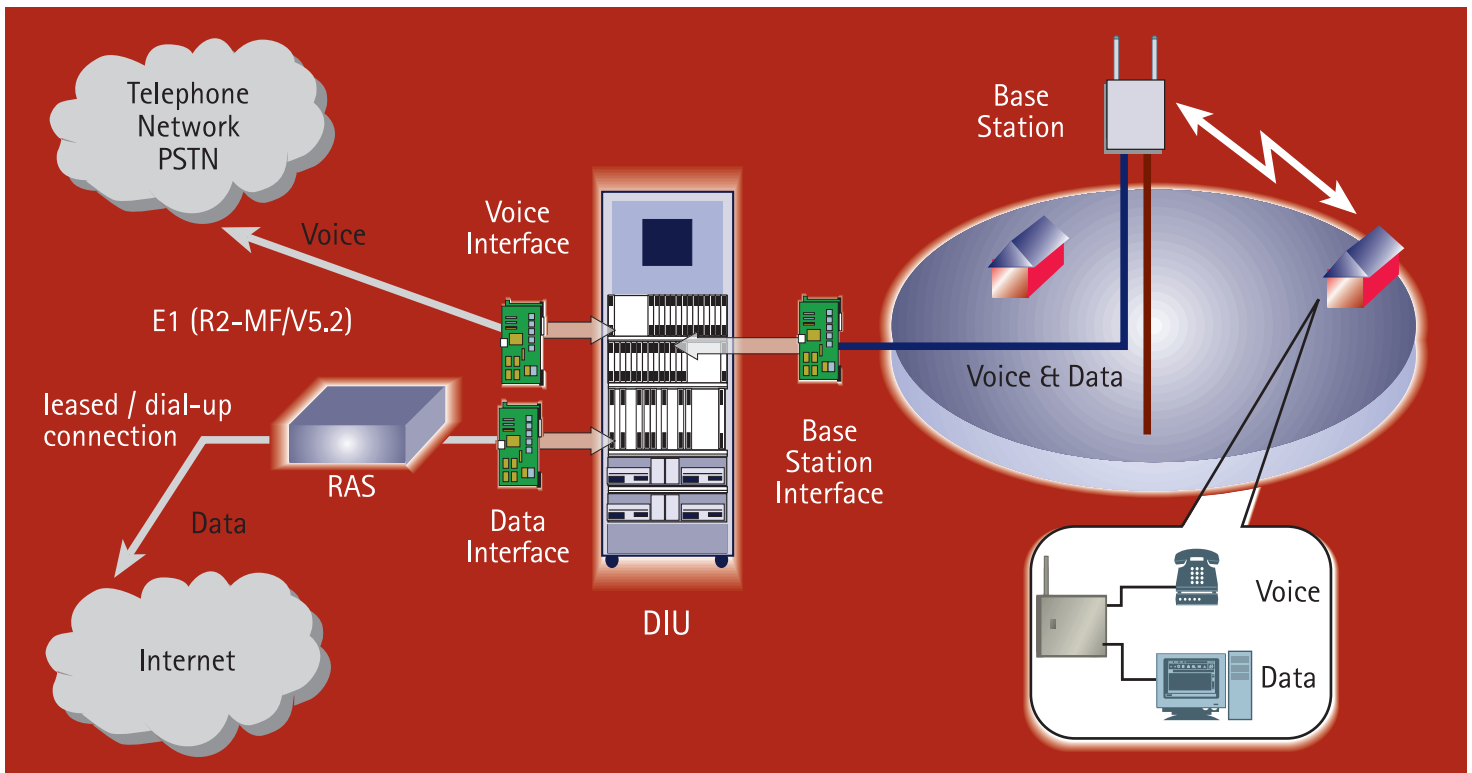
Internet Connectivity

Wireless Local Loop

DECLoop_{WLL}

closing the communication gap





Remote Access Server (RAS) – Packet Switched Network using RAS and Router for Internet Access

DECLoop system consists of a RAS module that allows the operator to configure a Packet Switch Network that consolidates individual subscriber data traffic into single TCP/IP data stream. This enables the operator to provide voice and data services to its end-customers, simultaneously. The RAS module enables the remote subscriber-users access to the data network, such as Internet, via the IP enabled subscriber units.

Each RAS supports up to 60 simultaneous local subscriber connections and up to four (4) units of RAS can be supported on one DECT Interface Unit (DIU) thus providing up to 180 simultaneous connections per system. This arrangement ensures very high erlang traffic for individual subscribers.

Supported Features:

- No. of RAS per DIU system : 4
- No. of connections : 60 connections per RAS (240 connections per DIU)
- Data speed per connection : 70kbps (data only), 35kbps (simultaneous voice and data)
- Interface to data network : 10 Base-T (RJ45 connector). Other interfaces are optional.
- Interface to ISP : via third party router and hub
- WAN support : PPP compliant to RFC-1661 PAP
- Remote configuration support : Yes (remote software download using SNMP version-1. Support of SNMP version-2 or PPP LQM is optional)
- Hot-swap : Yes. RAS module is hot-swappable (with optional automatic booting of the new cards using the configuration of the previous faulty card)
- Individual access control list : Yes. Optional (Telnet Access is not applicable)

Other Supported Features:

- Proxy Radius Queries
- Uniform Numbering for Internet Access
- Subscriber authentication
- Security features
- PPP Authentication Protocol (PAP) support (compliant to IETF RFC 1334 for Internet Access)



BBS Access Pte Ltd

12 Genting Road, The Blue Building Singapore 349474

Tel: (65) 6559 8500 Fax: (65) 6746 7305 Email: bbsaccess@bbsgroup.com.sg

Website : www.bbs.com.sg