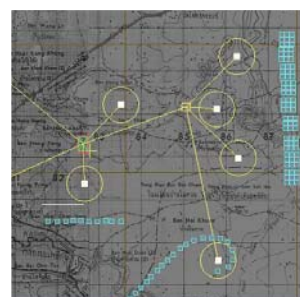
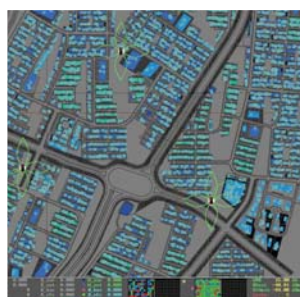


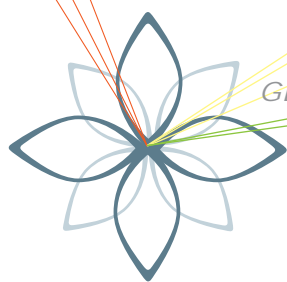


## A Comprehensive Design Solution offering:

- ✿ Simultaneous RF and Traffic Analysis
- ✿ Predicting and Measuring QoS
- ✿ Simulation of Uplink as well as Downlink Traffic
- ✿ Powerful tool run on a moderate hardware

••• in one package





GET REAL WITH

DECSim™

WLL

network design tool

### What is DECSim™?

DECSim™ is an advanced wireless radio network design and simulation tool developed by BBS Access specifically for use with the DECT-based Wireless Local Loop (WLL) networks. DECSim™ is intended for use by professional network designers and is employed to develop initial designs of large fixed radio networks, verify or optimize existing networks, plan expansions of existing networks and to analyze potential problems with installed networks. With a user friendly GUI, this fully featured planning tool provides point and click functionality for equipment placement, traffic analysis, RF analysis GoS analysis and simulation of uplink and downlink traffic.

### Life Cycle Planning

After deployment of a network, the DECSim™ continues to assist with ongoing planning activities such as service additions, changes, additional deletions of subscribers infrastructure. The DECSim™ provides scenario planning—the “what-if” scenarios—that help the Operator to adjust traffic demands over time, vary infrastructure and see the effect on costs and equipment utilization. “Live” simulation for analysis of these scenarios can be generated using the DECSim™ giving you an exact scenario of your network’s performance.

### How can DECSim™ add value to my business?

The tool provides the network operator with a virtual environment where the end-to-end performance of DECLoop Voice and Data services can be predicted for a given network-configuration under specified traffic mix and load scenarios.

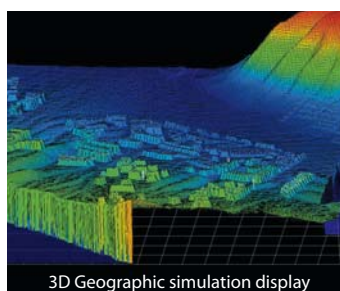
The DECSim™ solves two fundamental problems: firstly, it provides a prediction of the end-to-end service quality for a single user and/or groups of users in a given network-scenario, and secondly, it can predict the limiting factors in achieving a certain level of performance and the end-to-end service quality.

The benefits of solving these issues are enormous:

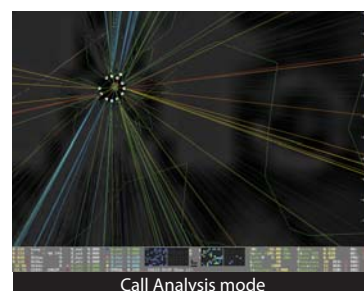
- Assurance of the successful launch of new services
- Assurance of service quality
- Optimized investments for achieving performance targets in a growing market by identifying the critical bottlenecks
- Increased revenue from data services due to a consistent service-quality in line with business objectives
- Efficient utilization of network resources by optimizing service-differentiation in line with market strategies
- Confident definition of achievable service-level agreement targets
- Quality-of-service issues are addressed before any impact upon business
- Avoidance of live-network disturbances during ‘what-if’ analyses
- Improved operational-efficiency by achieving fast responses to critical planning-questions
- Bridging of the gap between product-marketing, and network planning and operations

### What are the main features of DECSim™

1. Three simulations in one tool: **Radio Propagation (Uplink & Downlink), DECT Protocol and Traffic Simulation**
2. Provides a wide range of computer graphics and visualization tools as well as numerical outputs
3. Simulation can be running with only background image even when Topological and Morphological data are not ready
4. “Pre-Built Data Procedure” method helps to save the loading time
5. “Delay Mode” and “Screen Delay Level” allow users to analyze the individual subscriber’s during various analysis modes
6. Provides detailed traffic, call progress, call blocking analysis for each individual subscriber, and Base Station loading, Relay Base Station loading, Network loading, Base Station usage patterns
7. Multiple RF display modes: Maximum RF Power, Total RF Power, RF SNR Indicator as well as in overlay and contour shaded display
8. Generates reports in form of Excel file, print’s a frame to .bmp file and simulation results can be a “Screen Capture” during any modes



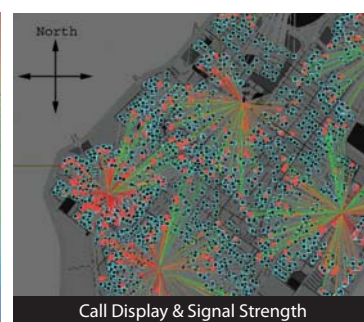
3D Geographic simulation display



Call Analysis mode



Maximum RF Power



Call Display & Signal Strength

### Who is DECSim™ for?

DECT WLL Manufacturers, Operators- Voice and Data (DECT WLL), Network Planning Service Providers, Network Integrators, Colleges/ Universities (educational)

### How can I get to know more about DECSim™?

To learn how to enhance your business network regionally and globally with DECSim™, please contact [bbsaccess@bbsgroup.com.sg](mailto:bbsaccess@bbsgroup.com.sg) or visit us online at [www.bbs.com.sg](http://www.bbs.com.sg)



B.B.S. @ccess

10 Tannery Lane, BBS Building, Singapore 347773

Tel: (65) 6559 8500 Fax: (65) 6559 8560 Email: [bbsaccess@bbsgroup.com.sg](mailto:bbsaccess@bbsgroup.com.sg) <http://www.bbs.com.sg>

BBS Access reserves the right to make any modification to technical specification, product, or service offering at any time and without prior notice. The fact provided herein are for information purposes only and are not warranties, either expressed or implied, of product performance.